

September 28-29, 2024

COMPLEX TREATMENT PLAN.

CRITERIA FOR SUCCESS IN
PLANNING AND
IMPLEMENTING FIXED
PROSTHESIS ON IMPLANTS.
THEORY and
DEMONSTRATION COURSE
ON PHANTOMS

Doctor

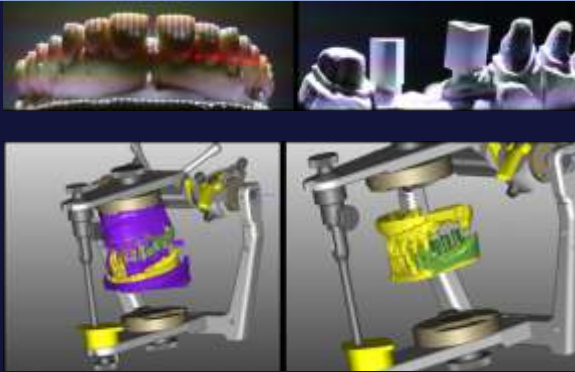
RAMI

BALABANOVSKY

D.M.D;Ph.D



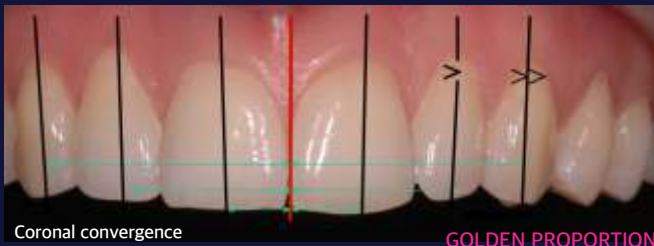
I. COMBINATION OF BOTH DIGITAL AND CONVENTIONAL DENTISTRY LAWS IN COMPLEX DENTAL TREATMENT



II. GEOMETRICAL ANALYSIS OF AESTHETIC PROSTHETICS

Apical divergence

AXIAL INCLINATION



Coronal convergence
Ideally, symmetry and mirror image

GOLDEN PROPORTION

1. LEVEL OF THE FACE.

Harmony and disharmony of the face.

2. LEVEL OF THE LOWER THIRD OF THE FACE. COMBINATION OF TEETH AND LIPS AT REST, TALKING, SMILE.

3. GEOMETRY OF TEETH.

4. GEOMETRY OF GINGIVAL CONTOURS.



5. PHONETIC ANALYSIS AND ITS PURPOSE IN DETERMINING THE VERTICAL DIMENSION OF OCCLUSION, LOCATION OF TEETH, THEIR SHAPE AND SIZE.



PHONETIC ANALYSIS

6. ANALYSIS OF LIP SUPPORT IN AESTHETIC PROSTHETICS ON IMPLANTS. (φτο 12,13)

7. CRITERIA OF IDEAL SMILE. RADIAL AND HORIZONTAL SYMMETRY. (φτο14)



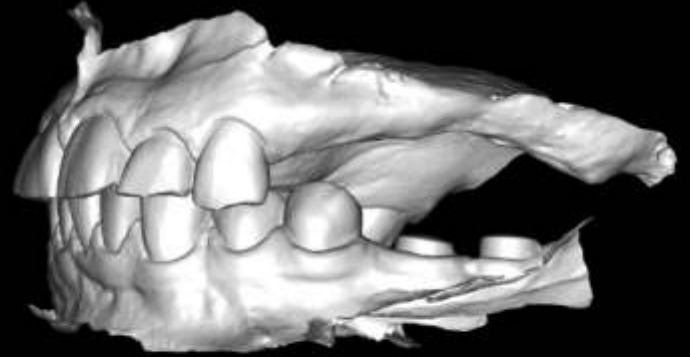
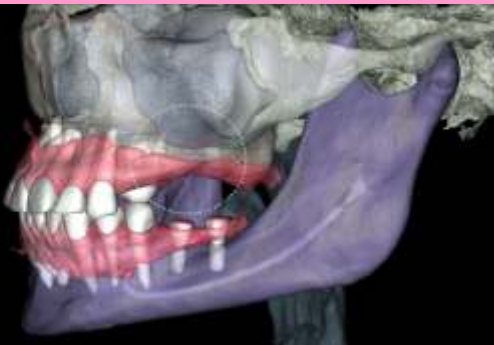


8. ILLUSORY PERCEPTION:

A technique for creating the illusion of changing the shape of a tooth by changing its contour and surface, while completely maintaining its perimeter. What needs to be done to make the tooth look: wide; low; narrow; high. (φωτο15)



III. USE OF ARTIFICIAL INTELLIGENCE (A.I.) IN COMPLEX DIAGNOSIS

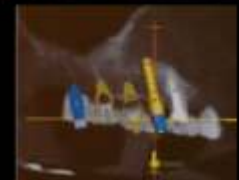


IV. TRANSFER OF JAW RELATIONSHIP, VERTICAL DIMENSION OF OCCLUSION, SHAPE AND SIZE OF TEETH FROM TEMPORARY PROVISIONAL RESTORATIONS TO FINALE DENTAL CONSTRUCTIONS



Provisional Restorations

Definitive implant-supported Prosthesis





1. TOTAL SCREWED PROSTHESIS ON 8 IMPLANTS ON THE MAXILLA ON MULTI-UNITS

2. TOTAL SCREWED DESIGN ON MULTI-UNITS DIRECTLY AFTER THE IMMEDIATE IMPLANTATION.

3. IMPLANT PROSTHESIS IN THE UPPER CENTRAL INCISER. IMMEDIATE IMPLANTATION AND IMMEDIATE LOADING.

4. CEMENTED AND SCREWED IMPLANT PROSTHESIS OF THE CENTRAL INCISOR.

5. CEMENTED AND SCREWED IMPLANTS PROSTHESIS IN THE POSTERIOR SEGMENT OF THE JAW

Demonstration course on phantoms

